

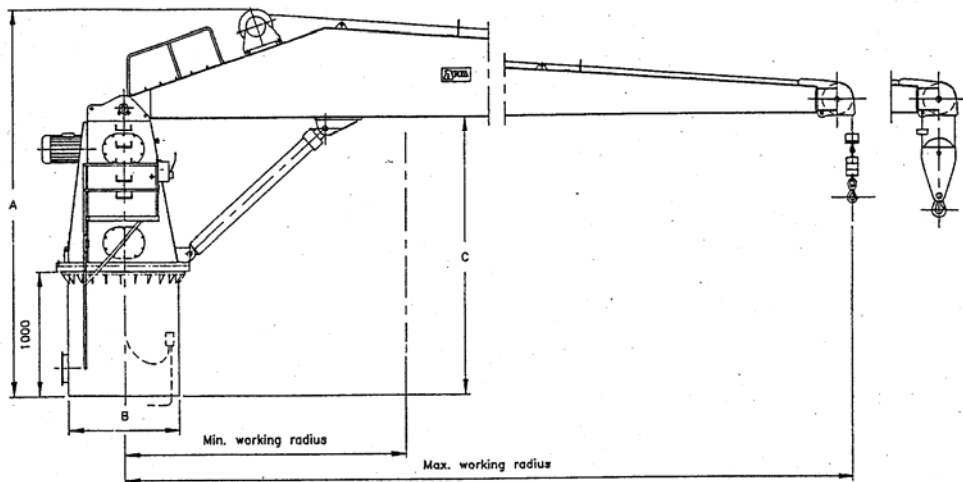


Crane – OK16

Manufacturer	Hydralift
Type	MCV 509-10-12 (20-6)
Serial No	7903616
Year of Manufacture	1979
Length	13m
Width	1.52m
Height	
Weight	12T
SWL	10Te @ 12m, 20Te @ 6m



BASIC DESIGN AND STANDARD SIZES OF ACTA DECK CRANES HHC-SERIES



DATA FOR ACTA DECK CRANES HHC-SERIES

Hoisting speed: 0-20 m/min. Slewing speed: 0,5 R.P.M.
 Luffing time: 60 sec. Slewing angle: 350 degr. restricted
 The speed stated correspond to 60 Hz - at 50 Hz these are reduced by 20 per cent.

Crane series	Type/size Max. size within the series	Lift.cap. SWL. kN.	Max. Working radius m.	Min. Working radius m.	Dimensions			Electric motor kW.	Weight approx. kg.
					A mm.	B mm.	C mm.		
HHC 8	HHC8-10-6 HHC8-15-5	10	6	1,5	2620	600	2040	6,3	1900
		15	5	1,3				9,5	1800
HHC 18	HHC18-20-9 HHC18-25-7	20	9	2,4	3450	800	2490	12,5	2700
		25	7	1,9				16	2500
HHC 30	HHC30-30-10 HHC30-40-8	30	10	2,7	3600	800	2510	19	3000
		40	8	2,2				25	2800
HHC 42	HHC42-30-14 HHC42-40-10	30	14	3,2	3700	930	2660	19	4200
		40	10	2,3				25	3900
HHC 50	HHC50-40-12 HHC50-50-10	40	12	3,1	3850	930	2700	25	4700
		50	10	2,6				32	4300
HHC 75	HHC75-50-15 HHC75-60-12	50	15	3,0	4400	1190	3250	32	7200
		60	12	2,4				38	6900
HHC 110	HHC110-80-18 HHC110-80-12	80	18	3,9	4885	1190	3250	38	8500
		80	12	2,6				50	7500
HHC 125	HHC125-70-18 HHC125-80-16	70	18	3,8	4800	1520	3250	45	11600
		80	16	3,4				50	11200
HHC 180	HHC180-80-22 HHC180-100-18	80	22	5,1	4900	1520	3250	50	13500
		100	18	4,2				64	12000
HHC 230	HHC230-100-23 HHC230-200-11	100	23	5,6	5060	1545	3320	64	19000
		200	11	2,7				128	15000
HHC 300	HHC300-150-20 HHC300-200-15	150	20	5,0	5700	2000	3730	96	25500
		200	15	3,8				128	23500
HHC 350	HHC350-180-19 HHC350-200-17	180	19	4,8	5800	2000	3800	114	26000
		200	17	4,3				128	25000
HHC 400	HHC400-200-20 HHC400-250-16	200	20	4,7	5900	2000	3900	128	29000
		250	16	3,8				160	28000

OPTIONS:

EOI electrically remote-controlled crane with or without platform. Full hydraulic crane with separate pump station. With extra slewing motor and strengthened slewing moment in case of larger slewing angle than 5 degr. heeling and 2 degr. trim. Strengthened crane executions in case of exceptional dynamic forces.

Hydraulic cylinder with piston rod of stainless steel and hard chrome. Central lubrication of slewing ring.

HOSE HANDLING CRANES HHC-SERIES

Agent:



Moskifabrik ACTA A/S
 Industrivej 9
 DK-5260 Odense S, Denmark
 Phone: +45 66 15 04 00
 Telefax: +45 66 15 35 37

91464A

Sep. 94