



Cable Measuring Wheels

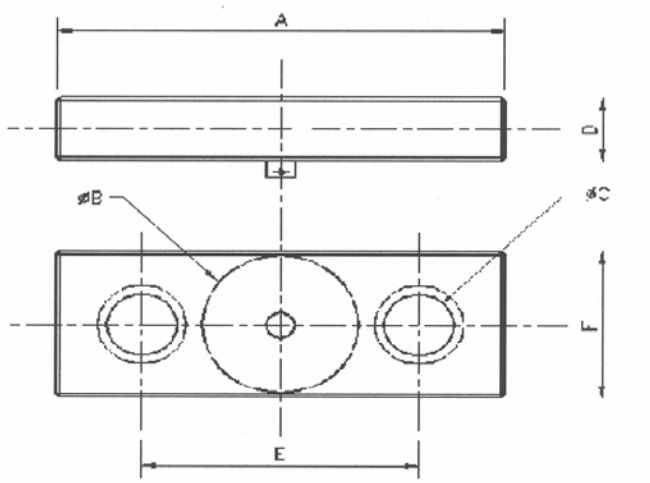
Asset no. NW1-1

Manufacturer	DLM Ltd
Size: -	
Length	1.5m
Width	1m
Height	1.5m
Weight	0.25 Tonne
The cable counter is designed for measuring speed and distance only.	
It allows for the free passage of cable, joints and repeaters. The measuring wheel is 225mm side and has a polyurethane tyre to give wear resistance and good traction on the cable. Data for the display meter is produced via a rotary quadrature shaft encoder inside a protective enclosure with an IP68 cable connector. The unit's height is adjustable to suit the working cable line.	



DYNAMIC LOAD MONITORING (UK) LTD
 Unit 3 Bridgers Farm, Nursling Street, Nursling, Southampton SO16 0YA
 Tel: (023) 8074 1700 - Fax: (023) 8074 1701

Standard Tensile Links



DIMENSIONS AND SPECIFICATIONS										
Load Capacity (tonnes)	Dimensions (millimetres)						Accuracy % FRO	Proof test % SWL	Weight (kg)	Resolution (kg)
	A	Ø B	Ø C	D	E	F				
2	215	82.5	28	24	145	86.5	±0.2	200	2	1
5	215	82.5	28	24	145	88	±0.2	200	2	2
10	236	82.5	37	38	146	88	±0.2	200	5	10
20	340	82.5	53	48	210	106	±0.2	200	10	10
25	340	82.5	53	48	210	106	±0.2	200	10	10
40	410	102	74	50	242	150	±0.2	150	15	50
50	410	102	74	58	234	150	±0.2	150	20	50
100	475	105	88	70	275	170	±0.3	150	35	100

MATERIAL: Matt chrome plated steel
 OPERATING TEMP RANGE: -10°C to +60°C
 SUPPLIED WITH: battery-powered hand-held display unit, 10m signal cable, carrying / stowage case
 CALIBRATION: supplied with calibration, proof load and test certificates to BS EN 10002/2 1992

SPECIFICATION CHANGES: the company's policy is one of continual development and the company reserves the right to effect changes to the published specification without prior notice.