



Scissor Lift Power Pack

Asset no. PP17

Manufacturer	FHP (Project No R13355)
This is a 7.5kW mobile Power Pack to serve the A-Frame Scissor Frame lift and damping circuits	
Size: -	
Length	0.900m
Width	0.600m
Height	1.245m
Weight	0.5Tonne
Hydraulic Oil	ISO 32 or Equivalent
Reservoir Capacity	200 Ltr
Main Motor	7.5kW, IP56
Main Pump	Marzocchi Pompe, 2D20R0 GAS
Main Pump Capacity	20 Ltr/min 140 bar Relief Pressure
Electrical Supply	415V, 3 Ph, 50Hz,



7.5 kW MOBILE SCISSOR LIFT POWERPACK DESCRIPTION

HYDRAULIC CIRCUIT

The system has a 20 LPM fixed displacement pump (2) flow to an electrically operated directional valve (7). To control the maximum system pressure there is a relief valve (6) fitted to the main manifold section (10). To protect the system from contamination coming from the main pump there is a pressure filter unit (26) fitted to the steel pipework supplying the manifold.

The directional control valve is open to prevent hydraulic locking in the neutral position and so enabling the removal of the quick release couplings. This also unloads the pump unit during the period, which the directional valve is de-energised. The valve stack also incorporates manually adjustable flow controls (8) for both ports 'A' and 'B'. This will control the speed of operation of the winch assembly. There is also a counterbalance valve (14) fitted to the B line, this will give a hydraulic braking should the mechanical brake fail, within the winch (15).

The system working pressure releases the motor brakes, which is pilot operated within the winch assembly.

There is a pressure filter unit fitted within the pipework between the pump unit and main manifold assembly. There is a gauge (13) fitted to indicate the system pressure. The starter controls are linked to a reservoir float level (24). This switches off the pump unit if a low oil level is indicated. The power pack is protected with a lifting frame and when the system is not operated there is a protective cover, which is placed over the powerpack.

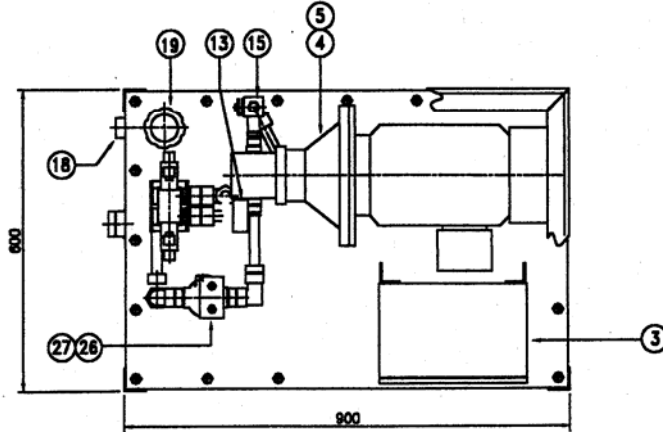
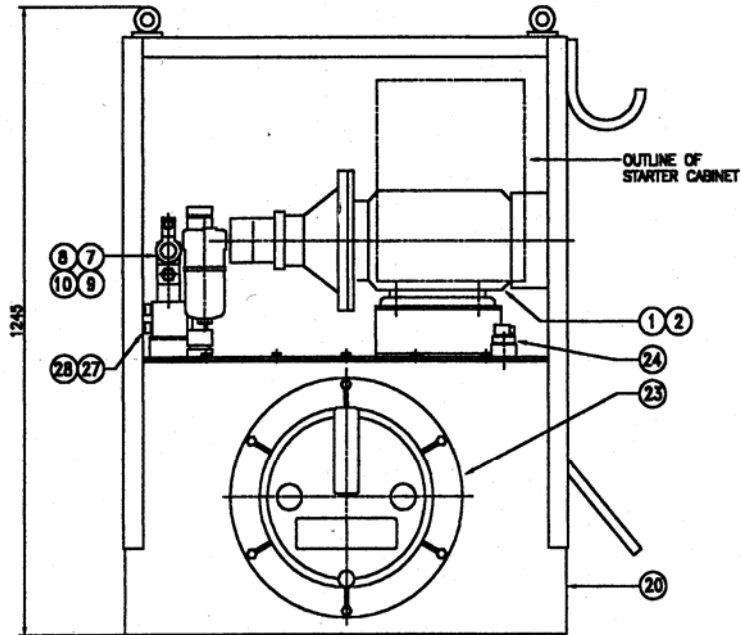
Damping System

Included to the circuit drawn (C684-00) is the DAMPING SYSTEM. This is a sealed system and the 20 Lt accumulator (21) acts as a reservoir and absorbs the differential areas of the damping cylinder (16).

The two speed controls (17) are fitted to control the speed which the scissors lift can lower. The speed controls are free flow in one direction; this allows the frame to lift as fast as the winch can recover the cable. But on the fall the flow in the full bore areas of the cylinders will pass through the speed adjustment.

To allow the system to be charged with oil there is a connection fitted to the side beam of the A frame. This is of the self sealing type QRC (22).

RevNo	Revision note	Date	Signature	Checked
-------	---------------	------	-----------	---------

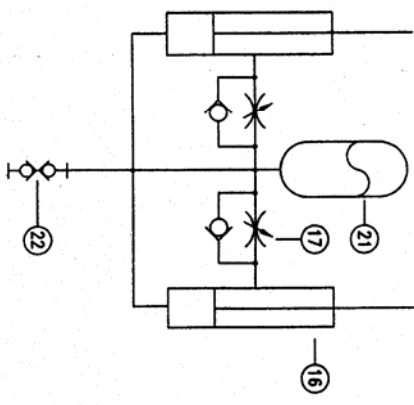
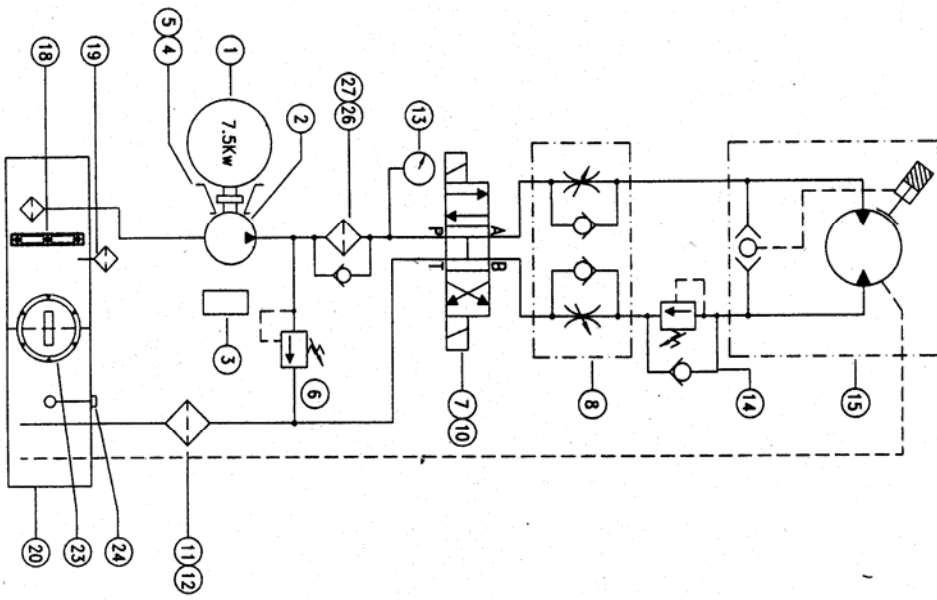


Existing law protects FRASER HYDRAULIC POWER LIMITED's right of possession to this drawing. The design must not, without permission of the company, be published, copied, reproduced, manufactured or exploited in any other unauthorized way.	CUSTOMER	GLOBAL MARINE	SCALE	1:10
	FHP PROJ No.	R13355	CHECKED	-
FHP LTD. FRASER HYDRAULIC POWER LTD. UNIT BT 98/4 WALKER INDUSTRIAL ESTATE FISHER STREET WALKER NEWCASTLE UPON TYNE NE5 4LT TEL: (0191) 263 7272 FAX: (0191) 263 4016 AFTER HOURS TEL: (0191) 263 4016	MATERIAL	-	DATE	11-9-00
	TITLE	7.5kW MOBILE POWERPACK GENERAL ARRANGEMENT	DRAWN	C. Amers
	DRAWING NUMBER	D684-00	SHEET	1(1)
			EDITION	A

Rev/Revision note

Date

Signature



<p>Caution: low pressure FINDER HYDRAULIC POWER LIMITED, right of possession in this drawing, the design, patent, trade mark, copyright, or other intellectual property rights, are reserved. Manufactured or supplied in any other manufacturing way.</p>	
CUSTOMER	GLOBAL MARINE SYSTEMS
FHP PROJ. No.	R13355
MATERIAL	
SCALE	CHECKED/HR
DATE	24.10.00
DRAWN	C. AMES
<p>FHP LTD FINDER HYDRAULIC POWER LTD. UNIT 81, 82/4, WALKER INDUSTRIAL ESTATE, WALKER STREET, NEWCASTLE UPON TYNE, NE3 4JF. TEL: (0181) 283 7772 FAX: (0181) 283 7773 TEL: (0191) 288 1471 FAX: (0191) 288 1471</p>	
TITLE/NAME	
7.5kW POWERPACK	
DRAWING NUMBER	
C684-00	
SHEET	EDITION
1(1)	A