

# Products

## Oceanscan Cathodic Protection (CP) System

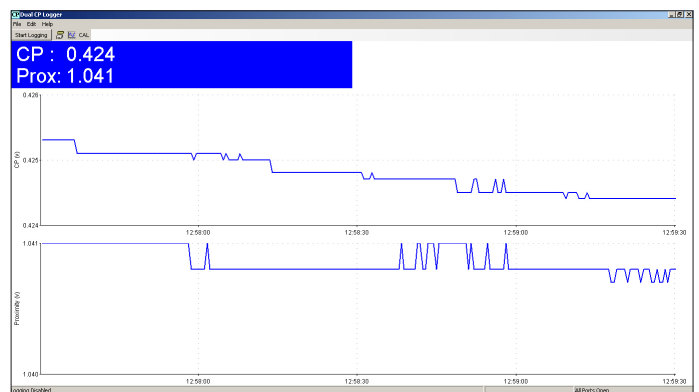
The Oceanscan dual CP ROV bottle is an innovative product, designed and built in house, that combines a traditional CP probe with modern digital electronics. Unlike conventional CP systems, the dual CP ROV bottle digitises the analogue voltage and transmits the data to the surface via a spare twisted pair in the ROV umbilical or via a data multiplexer.

The system can be used with both contact and proximity probes, both of which are supplied, along with 3.5m of cable. The subsea housing contains the conversion electronics and is depth rated to 1000m. RS232/RS485 data is simultaneously available from the dual CP ROV bottle.

### Run Both Probes Simultaneously

New dual ROV CP software v1.3 allows you to run calibration/verification through the ROV bottle. By connecting a K series reference cell direct to the MCBH-2F on the bottle.

On the surface, the data is displayed using a simple Windows platform through Oceanscan's user friendly software. Up to 4 inputs can be displayed and logged at the same time. The option to output a data string to an external data logger or device is also available.



Example showing history and live current reading

#### CP Probe:

- Buckleys UCP1A Contact probe
- UCP1B Proximity Probe
- Type: Silver/silver chloride screw-in
- Output:  $\approx +250\text{mV VS SHE}$
- Temperature coeff:  $-0.6\text{mV per }^\circ\text{C}$
- Temperature range:  $0 - 30\text{ }^\circ\text{C}$
- Size:  $126\text{mm} \times 39\text{mm}$  diameter
- Weight: 260g

#### Subsea Housing:

- Height: 330mm including connectors
- Diameter: 110mm
- Weight in air: 3.5Kg
- Weight in water: 1.5Kg
- Depth rating: 1000m
- Power requirements:  $12 - 24\text{VDC @ }1.2\text{W}$
- Data transmission: RS232, RS485
- Connector: 8 pin mini burton

#### Supplied with:

- Mating tail
- Transit case
- Kit comprising of: zinc test block, spare contact tips & test lead
- Software file